



MODULAR

Black Grate + Channel uPVC Kits

All Black Linear Drainage by Stormtech.

Stormtech's all black modular kits combine a powdercoat finished grate with a black uPVC channel + fittings to create the perfect finish. Designed for easy installation and available with all Stormtech grate styles.



- ✓ **Modular site finish system**
Adaptable / Easy to install system
- ✓ **Available in 100 and 65 Range**
- ✓ **Joiners and angle joiners available**
For indefinite lengths and corner installations

- ✓ **Extensive selection of designer grates**
Choose from Stormtech's range of grates and Tile Insert drains to suit your budget
- ✓ **Great value and unmatched flexibility**
- ✓ **Black channels suitable for internal use**
For showers, bathroom and internal wet areas

Phone 1300 653 403 | Web stormtech.com.au



All Black uPVC Kits

Modular, site finished linear drainage.
Black grate, uPVC channel + fittings.

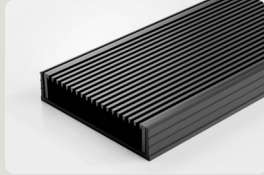
AVAILABLE KIT LENGTHS

900mm 1800mm 2700mm
1000mm 2000mm 3000mm
1200mm 2200mm
1500mm 2400mm

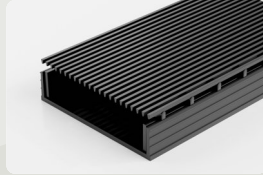
Tile Insert not available in 2200mm



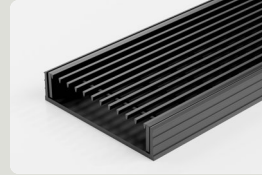
100 Range Black Powdercoat Grate



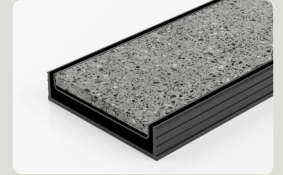
100ARGALLBL20
Premium Grate
2mm wire/2.5mm gap
106mm x 23mm
DN40 / DN50 / DN80
DN100



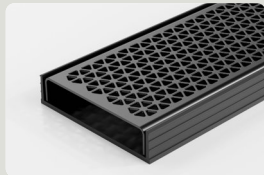
100ARGALLBL30
Premium Grate - Channel Overlay
2mm wire/2.5mm gap
106mm x 32mm
DN40 / DN50 / DN80
DN100



100TRGALLBL20
Standard Grate
3mm wire/5mm gap
106mm x 23mm
DN40 / DN50 / DN80
DN100



100TiGALLBL20
Tile Insert
Tiles up to 10mm Deep
106mm x 23mm
DN40 / DN50 / DN80
DN100



100MNDGALLBL20
Marc Newson Design
106mm x 23mm
DN40 / DN50 / DN80
DN100



100PSGALLBL20
Punched Slot Design
106mm x 23mm
DN40 / DN50 / DN80
DN100



100PPSGALLBL20
Punched Perpendicular
Design
106mm x 23mm
DN40 / DN50 / DN80
DN100



100PASGALLBL20
Punched Angle Design
106mm x 23mm
DN40 / DN50 / DN80
DN100

65 Range Black Powdercoat Grate



65ARGALLBL25
Premium Grate
2mm wire/2.5mm gap
74mm x 27mm
DN40 / DN50



65TRGALLBL25
Standard Grate
3mm wire/5mm gap
74mm x 27mm
DN40 / DN50



65TiGALLBL25
Tile Insert
Tiles up to 10mm Deep
74mm x 27mm
DN40 / DN50



65MNDGALLBL25
Marc Newson Design
74mm x 27mm
DN40 / DN50



65PSGALLBL25
Punched Slot Design
74mm x 27mm
DN40 / DN50



65PPSGALLBL25
Punched Perpendicular
Design
74mm x 27mm
DN40 / DN50



65PASGALLBL25
Punched Angle Design
74mm x 27mm
DN40 / DN50

Black uPVC channels suitable for indoor use only.

Visit stormtech.com.au for detailed
assembly and installation information.



ARCHITECTURAL
GRATES + DRAINS