

Order and Quote Form

# Made-to-Length Linear Drainage › Multiple Outlet



Select Grate Style

<input type="checkbox"/> <b>AR Architectural</b> 2mm wire 2.5mm gap	<input type="checkbox"/> <b>TR Standard</b> 3mm wire 5mm gap	<input type="checkbox"/> <b>PS Punched Slot</b>	<input type="checkbox"/> <b>MND Marc Newson</b>	<input type="checkbox"/> <b>PAS Punched Angle Slot</b>	<input type="checkbox"/> <b>PPS Punched Perpendicular Slot</b>

Tray Profiles

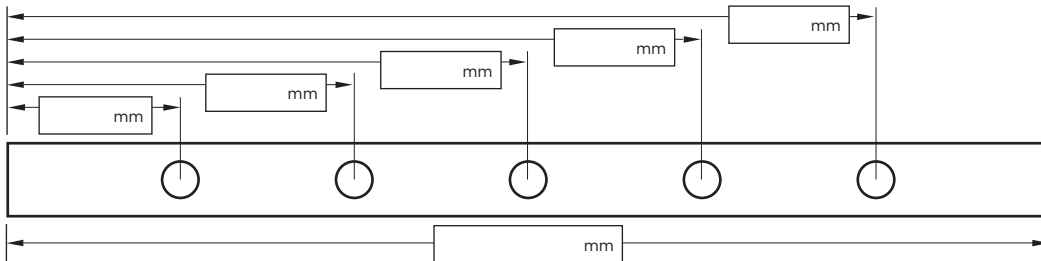
100 Range



65 Range



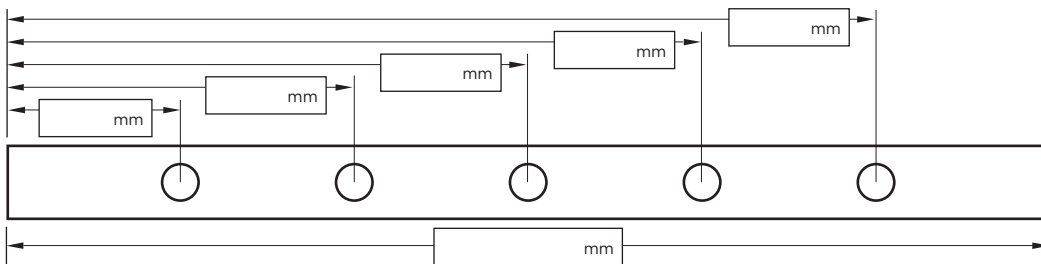
Specify Length, Outlet Positions/Size and Profile Required



**Drain 1**

**Profile Required**  
 1  2  3  4

**Outlet Size**  
 38mm  44mm  51mm  
 63mm  76mm  89mm



**Drain 2**

**Profile Required**  
 1  2  3  4

**Outlet Size**  
 38mm  44mm  51mm  
 63mm  76mm  89mm

**NOTE:** See AS3500 standard & local regulator for specific outlet/drain requirements. Outlet Size must be smaller than selected Range. MND grate style not available with Profiles 2 or 4. Stainless Steel Grade is 316 unless specified. Made-to-Length (MTL) minimum charge of 800mm. Grates over 1500mm are supplied in multiple sections. Channels over 3000mm are supplied in multiple sections with joiner. Orders received after 11am are processed next working day. +/- 2mm tolerance on dimensions.

**Full Name**

**Company Name**

**Telephone**

**Email Address**

**Order Number**

**Stormtech Quote Number**

**Signature**